



The European  
Training Strategy &  
the Competence  
Model for Youth  
Workers to Work  
Internationally



What is in the presentation for you?

- Who is SALTO T&C RC and what is our role
- What is behind the European Training Strategy (ETS)
- Presentation of the Competence model

## ETS – What for?

The European Training Strategy (ETS) is the main strategy for the **development of quality youth work**



ETS supports **linking youth policy developments in youth work** with the capacity building of youth workers

## ETS – What does it focus on and who is it for?

**Capacity building as one of the key elements for the development of quality youth work in Europe**

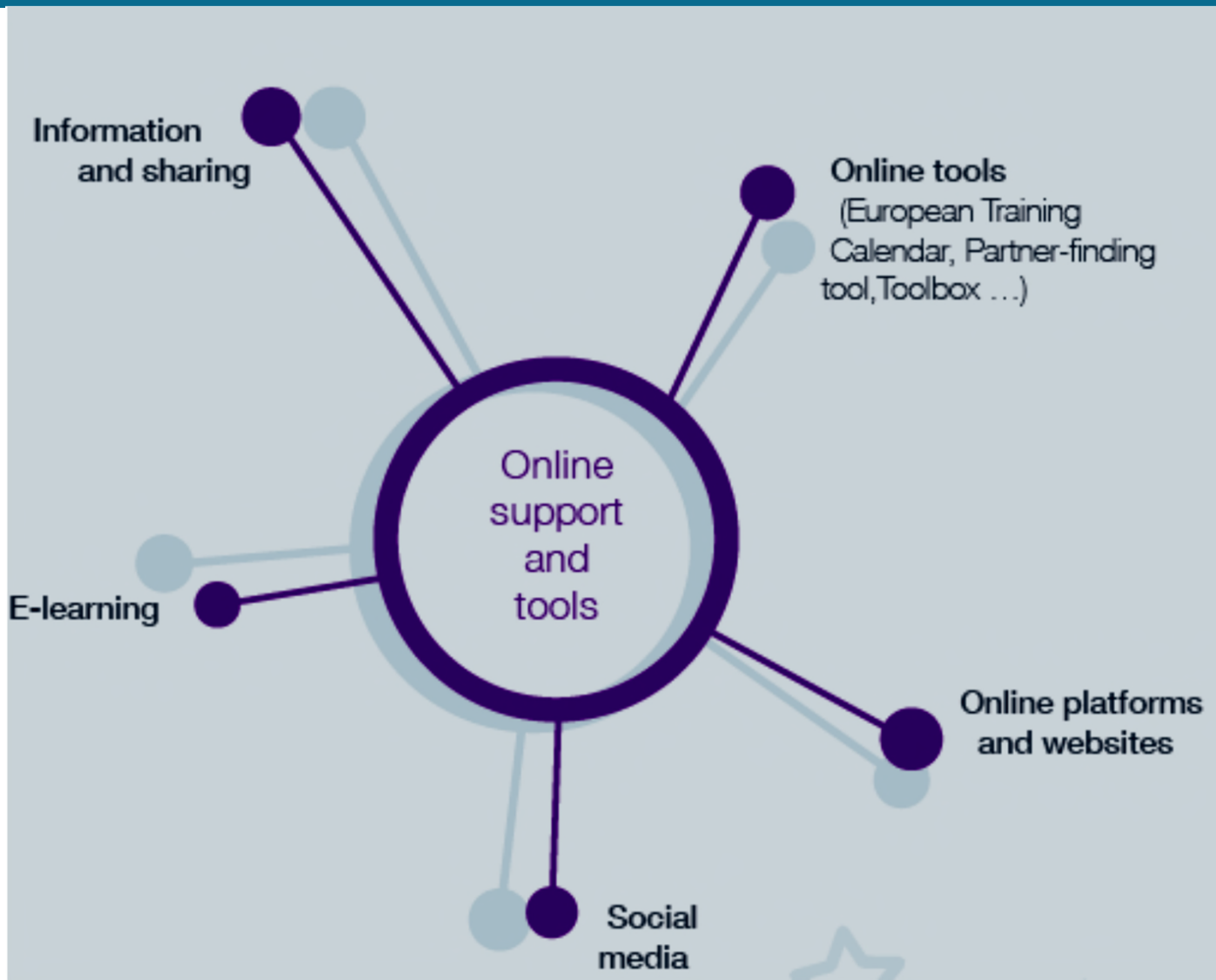
- **Support for individuals**
- **Organisational development**
- **Systemic framework development**



# ETS - fields of actions : Competence development and learning



# ETS - fields of actions : Online support and tools



# ETS - fields of actions : Contribution to building [more] knowledge about capacity building in youth work



# ETS Competence Model for Youth Workers : for what and for who?

Focusses on the **demands of youth workers**

- to integrate European issues into daily work life
- to work in international teams
- to support young people in international learning mobility projects





# ETS Competence Model for Youth Workers : for what and for who?

## **The international dimension** - Characteristics of international youth work

- happens with international colleagues/in international teams, in most cases in another language than the native one,
- value-oriented contexts, e.g. as in European programmes: participation, inclusion, democracy, human rights, etc.
- the mainly residential character of activities (living and working together 24hours influences non-formal and informal contexts), and
- the political contexts, be it in Europe or in worldwide environments.

# ETS Competence Model for Youth Workers : for what and for who?

## Target groups

- Youth workers involved in international learning mobility projects for young people
- Support staff (pedagogical including trainers) of structures and organisations active in international mobility projects
- Organisations and institutions developing and offering training & education strategies for youth workers



# ETS Competence Model for Youth Workers : for what and for who?

## What is a youth worker?

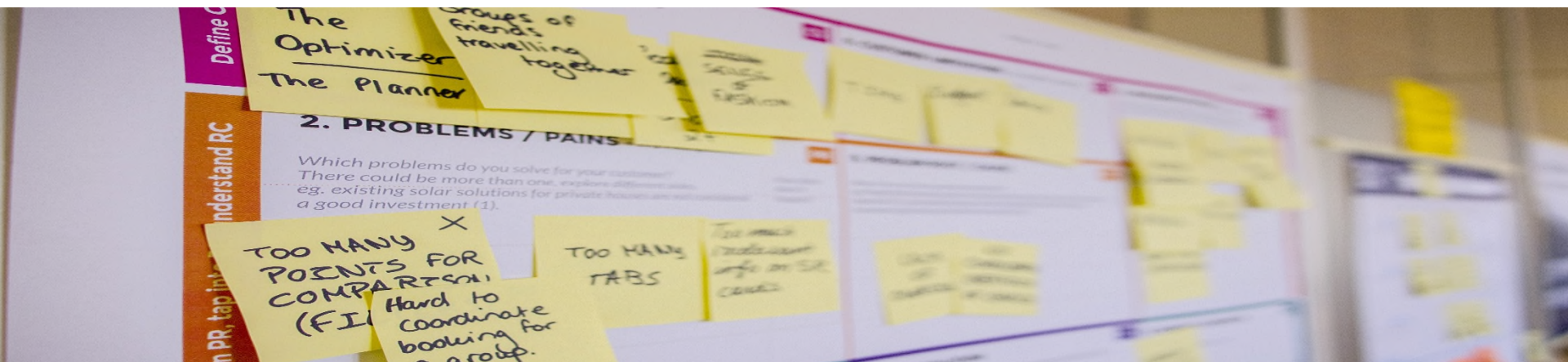
- works with young people
- variety of non-formal and informal learning contexts
- typically focusing on the young peoples' personal and social development
- one-on-one relationships and group-based activities.

While acting as trainers/facilitators may be their main task, it is just as likely for youth workers to take a socio-educational or social work-based approach.

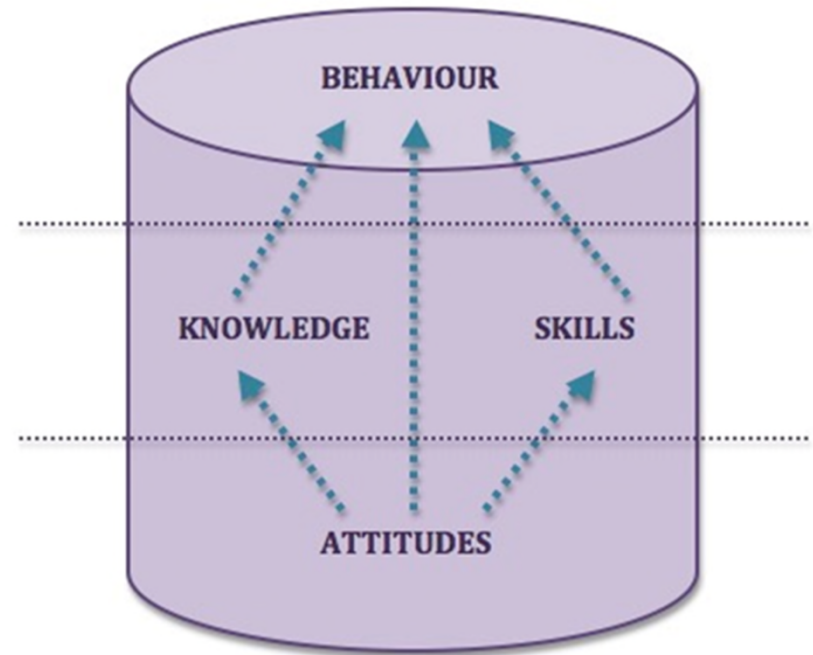
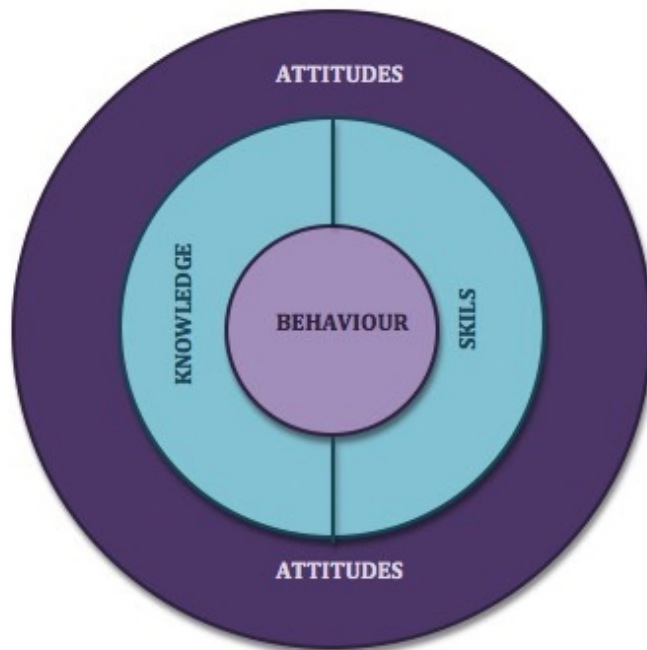
# ETS Competence Model for Youth Workers : for what and for who?

**Traditions of youth worker education and training** in the European countries are very different

- Formal education in youth work exist or not
- youth work profession/occupational profile exists or not
- paid or voluntary youth work
- the longer or shorter tradition in youth organisations (small/big scale)
- Between mainstreamed concept and the tailor-made approaches



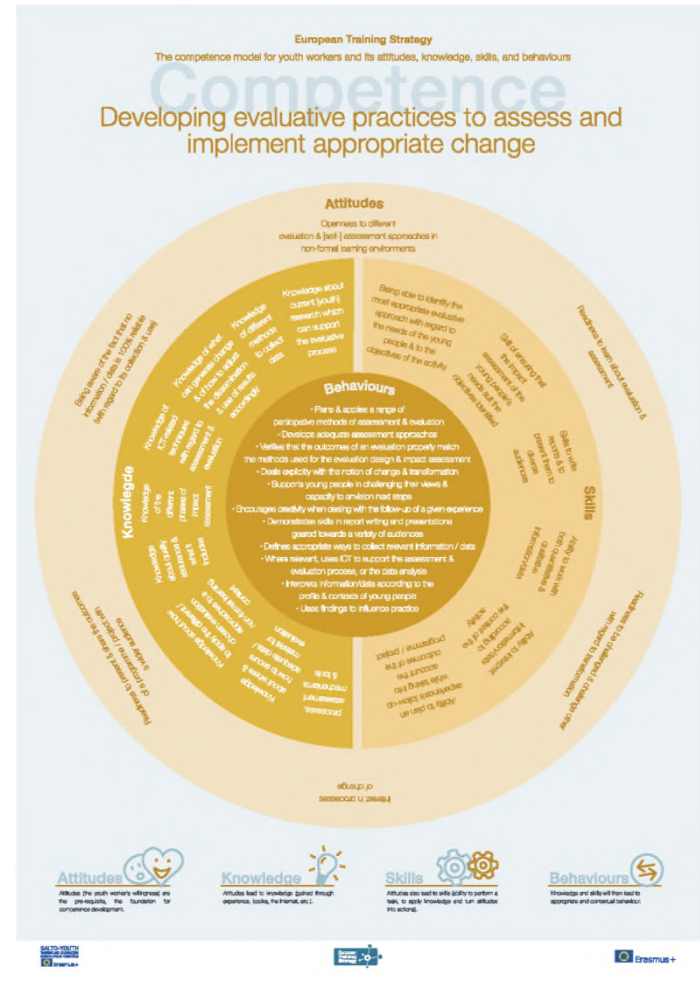
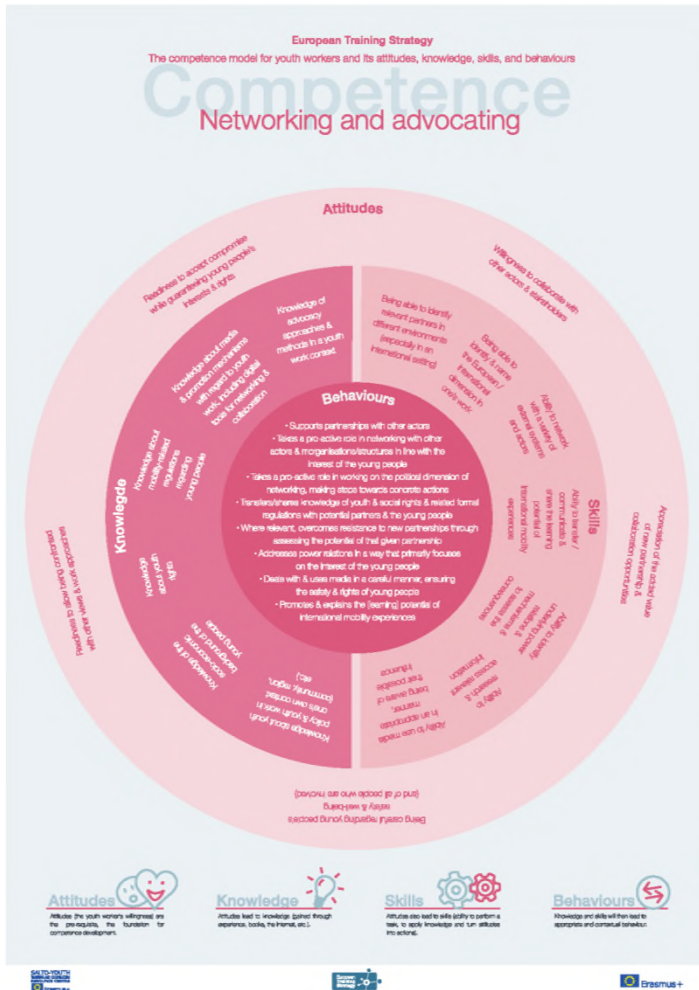
# ETS Competence Model for Youth Workers: the structure & the approach







# ETS Competence Model for Youth Workers: the competence areas





## ETS Competence Model for Youth Workers is also about...



Intuition

Authenticity

Integrity

Inner  
readiness

# ETS Competence Model for Youth Workers : the principles

A black sign with white text that reads "GOOD VIBES ONLY". The sign is placed on a concrete floor in what appears to be a workshop or training environment. The background is slightly blurred, showing some equipment and a person in the distance.

GOOD  
VIBES  
ONLY

## The NFL principles behind the competence model

- Learner-centeredness (i.e. a focus on the learner and their development)
- Agreement between youth worker and learners on learning objectives
- Transparency
- Confidentiality
- Attention to content and methodology
- Voluntariness
- Participation
- Ownership
- Democratic values and practices

## ETS and the Competence Model for Youth Workers : next steps

- Currently: Pilot training activities online and offline YOCOMO
- Development of guidelines (2020)
- Translations into different languages (in process: DE, FR, SI, SK, EE)
- Digital competences and civic competences to be added (2019-2020)
- Contextualisation in the frame of the further developed ETS (2019-2020)



Thank you very much for your attention!

[www.salto-youth.net/ets](http://www.salto-youth.net/ets)

Contact SALTO T&C RC

Gisele Evrard Markovic,  
[gisele@salto-youth.net](mailto:gisele@salto-youth.net)

t

Pictures: Teddy Kelley, Bryan Goff, Simson Petrol, Pablo Garcia Salana, James Baldwin, Annie Spratt, Emily Goodhart, Mark Adriane, Karly Santiago, Daniel Cheung, Alejandro Salarez, Healthy Mond, Ashley Batz, Javier Penas, Gemma Evans, Nik, Aline Grubnyak, Dakota Corbin, Daria Nepriakhina, Rawpixel, Lacie Slezak - all for Unsplash. Illustrations of the competence model: Mandy Krühne for kreativraum